

Even if your wireless network has been properly designed, the only way you will ensure it works properly is through a Wi-Fi site survey. At its simplest, the validation survey is the second set of eyes hyper-focused on making sure the network you designed works how it's supposed to in the real world — it's using the tools and techniques available to make data-driven Wi-Fi choices that remove risk and ensure your enterprise wireless network is always perfectly tuned to the needs of your users.

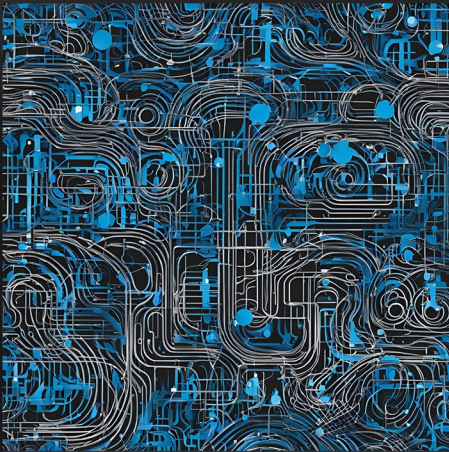
Wi-Fi site surveys are used to test both predictive wireless designs before a network is deployed as well as to verify that changes or additions are installed correctly and that the network continues to be fast and reliable for its users and applications.

In recent years, the evolution of the Wi-Fi survey has moved away from Wi-Fi adapter-laden computer setups with backup battery systems that require the surveyor to push around a custom cart just to collect data. We are now in a wireless-first world and we're able to conduct Wi-Fi site surveys with help from the phone in your pocket.

In fact, conducting a Wi-Fi site survey is easier and faster than ever before—which not only makes it easier to validate your network, but it also opens the door for businesses to survey more often to ensure their networks continue to operate flawlessly for business-critical applications.

For the network owner responsible for a location's Wi-Fi reliability and performance, having the right tools and knowing what to look for is fundamental for deploying and maintaining today's business-critical wireless networks. Spherica uses Ekahau survey technology.

Contact Spherica today to resolve these issues with our Wi-Fi Assessment Service.



THE WIFI ASSESSMENT SERVICE RISK REPORT:

- How to improve signal and coverage
- Actions to increase efficiency and optimisation of the Wi-Fi network.
- Topology diagram of the Wi-Fi network and device
- Validate your Wi-Fi network design
- Wall types and expected signal attenuation
- Noisy neighbours
- Full security and risk assessment report
- Produce action plan that resolves identified issues
- Provide cost estimate for Spherica to Project Manage the resolution of problems identified.

Contact Spherica today and speak to our Wi-Fi Assessment expert for advice.

ABOUT SPHERICA

Spherica is a new breed of IT Managed Service Provider. By putting automation at the heart of our day-to-day operations, we deliver lightning fast, super-efficient and highly cost-effective IT services. The very definition of what any progressive business needs to gain a competitive advantage in the modern digital economy. Spherica will apply the same Automated strategy when performing the WiFi Assessment Service.



Wi-Fi Network topology
and configuration review



Performance evaluation



Improve coverage and
connectivity speed



Reduce interference



Wi-Fi Network inventory



Enhance user experience

BENEFITS

Wi-Fi Assessment Service – Surveys Overview

A Wi-Fi site survey is a site visit to capture Wi-Fi signal and spectrum data and inspect access point mounting and cabling accessibility. Wi-Fi site surveys can test predictive wireless designs before a network is deployed, verify that changes or additions are installed correctly, and ensure that the network continues to be fast and reliable for its users and applications.

The survey generally relates to one of the following five site survey types:

- Wi-Fi Design Survey
- Pre-Deployment Site Survey
- Post-Deployment Site Survey
- Health Check Survey
- Troubleshooting Wi-Fi Survey

WHAT'S NEEDED?



1 x SPHERICA ENGINEER SITE VISIT
We will dispatch an engineer to visit
your site to conduct the survey
using Ekahau technology



2 x ENGAGEMENTS
The survey is followed by a
Teams meeting to explain our
final report & recommendations

CONTACT SPHERICA TODAY AND SPEAK TO OUR WIFI ASSESSMENT SERVICE EXPERT FOR ADVICE